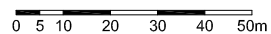


SITUACIJA

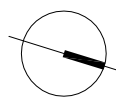
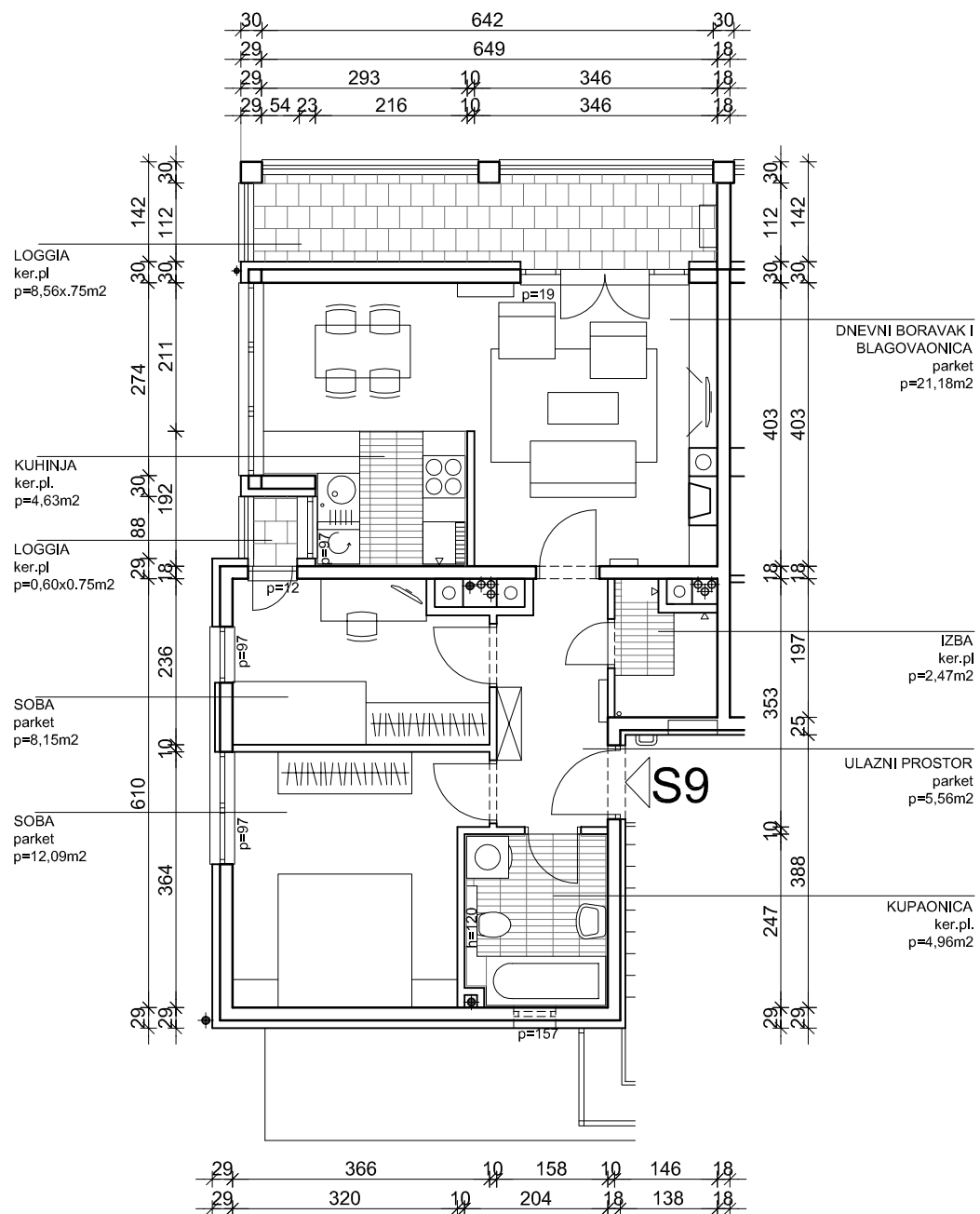
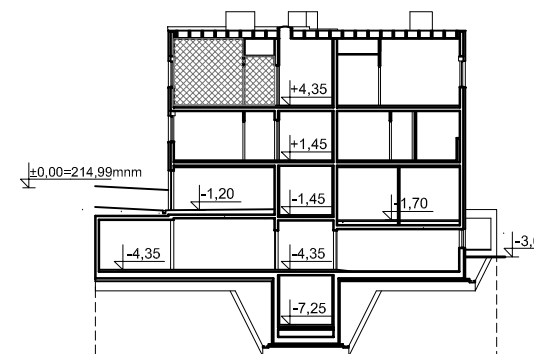
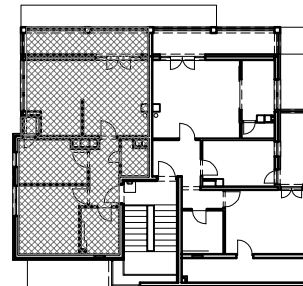


Z4-2

POTKROVLJE:
STAN S9
P=69,16m²

POTKROVLJE = razina +4,35 m

PRESJEK



iskaz površina	potkrovlje	dvoipolsobni stan	Z42-S9
prostorija	netto površina	netto komercijalna površina	m ²
ulazni prostor	5,56	5,56	m ²
kupaonica	4,96	4,96	m ²
soba	12,09	12,09	m ²
soba	8,15	8,15	m ²
izba	2,47	2,47	m ²
dnevni boravak i blagovaonica	21,18	21,18	m ²
kuhinja	4,63	4,63	m ²
loggia (0,75)	8,56	6,42	m ²
loggia (0,75)	0,60	0,45	m ²
UKUPNO:	68,20	65,91	m ²
spremište 9 (0,5)	6,49	3,25	m ²
SVEUKUPNO Z42-S9:	74,69	69,16	m²