

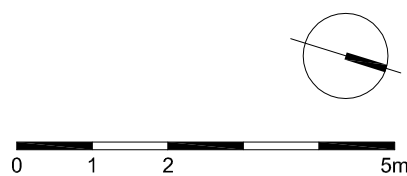
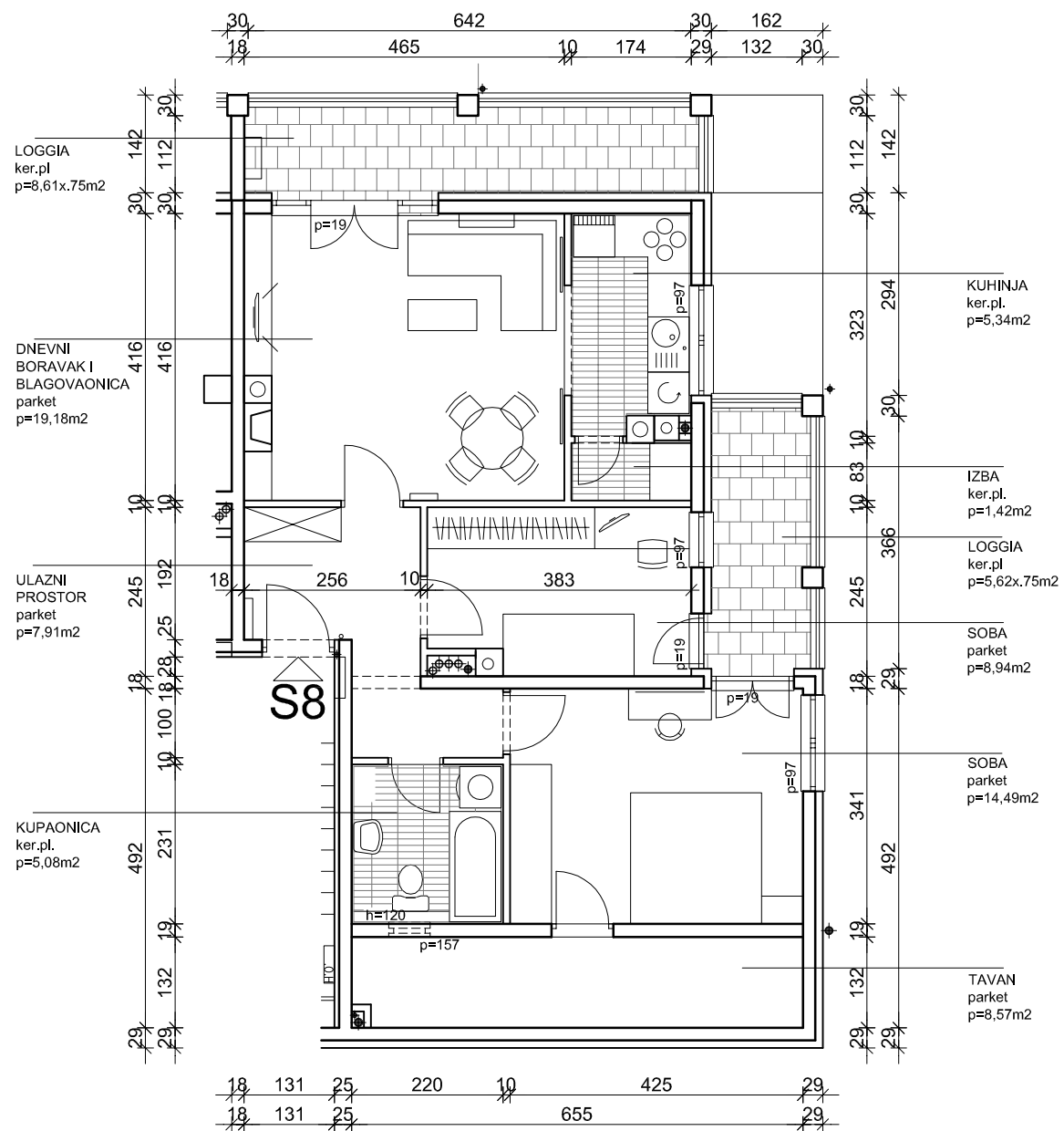
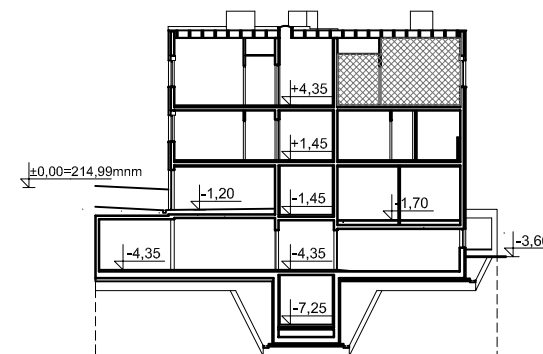
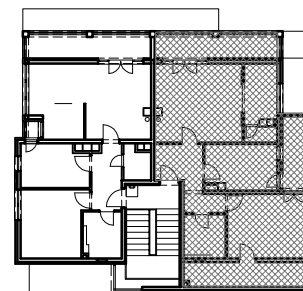
SITUACIJA

Z4-2

POTKROVLJE:
STAN S8
P=70,00m²

POTKROVLJE = razina +4,35 m

PRESJEK



iskaz površina	potkrovlje	dvoipolsobni stan	Z42-S8
prostorija	netto površina	netto komercijalna površina	m ²
ulazni prostor	7,91	7,91	m ²
kupaonica	5,08	5,08	m ²
soba	14,49	14,49	m ²
soba	8,94	8,94	m ²
dnevni boravak i blagovaonica	19,18	19,18	m ²
kuhinja	5,34	5,34	m ²
izba	1,42	1,42	m ²
loggia (0,75)	5,62	4,21	m ²
loggia (0,75)	8,61	6,45	m ²
tavan (0,00)	8,57	0,00	m ²
UKUPNO:	80,08	67,94	m ²
spremište 8 (0,5)	4,12	2,06	m ²
SVEUKUPNO Z42-S8:	84,20	70,00	m²