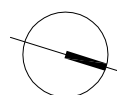
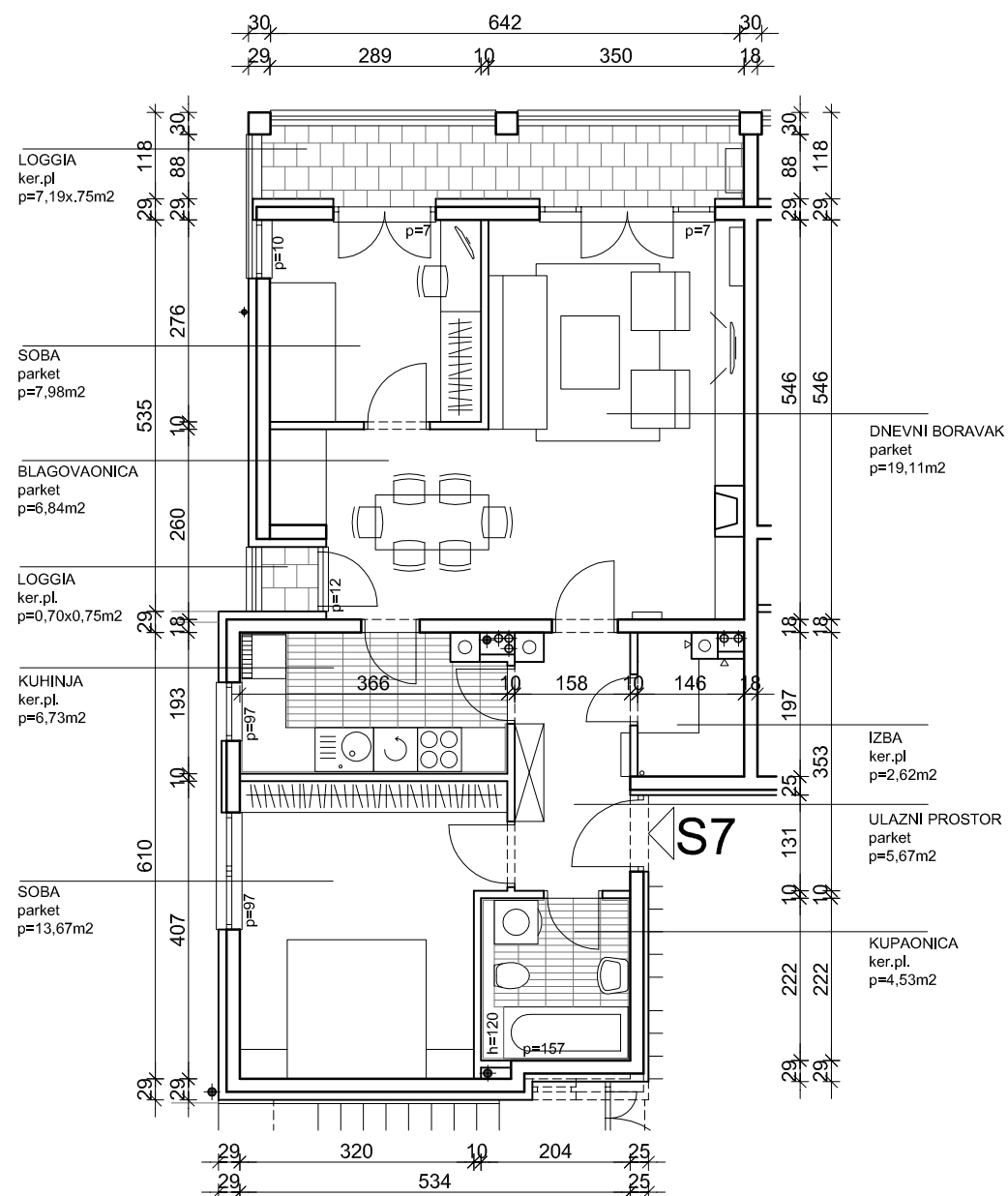
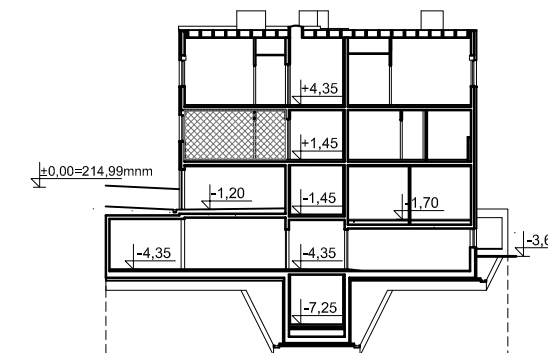
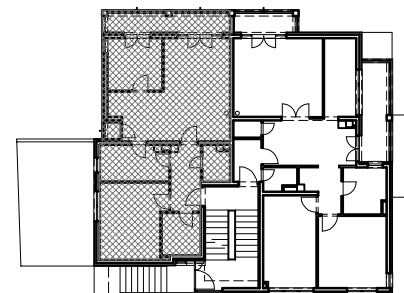


SITUACIJA

Z4-2
2.KAT :
STAN S7
P=75,21m²

2.KAT = razina +1,45 m

PRESJEK



| iskaz površina | 2.kat | dvoipolsobni stan | Z42-S7 |
|--------------------------|----------------|-----------------------------|----------------------|
| prostorija | netto površina | netto komercijalna površina | m ² |
| ulazni prostor | 5,67 | 5,67 | m ² |
| izba | 2,62 | 2,62 | m ² |
| kupaonica | 4,53 | 4,53 | m ² |
| soba | 13,67 | 13,67 | m ² |
| kuhinja | 6,73 | 6,73 | m ² |
| soba | 7,98 | 7,98 | m ² |
| blagovaonica | 6,84 | 6,84 | m ² |
| dnevni boravak | 19,11 | 19,11 | m ² |
| loggia (0,75) | 7,19 | 5,39 | m ² |
| loggia (0,75) | 0,70 | 0,52 | m ² |
| UKUPNO: | 75,04 | 73,06 | m² |
| spremište 7 (0,5) | 4,30 | 2,15 | m ² |
| SVEUKUPNO Z42-S7: | 79,34 | 75,21 | m² |