

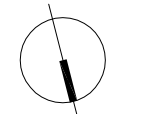
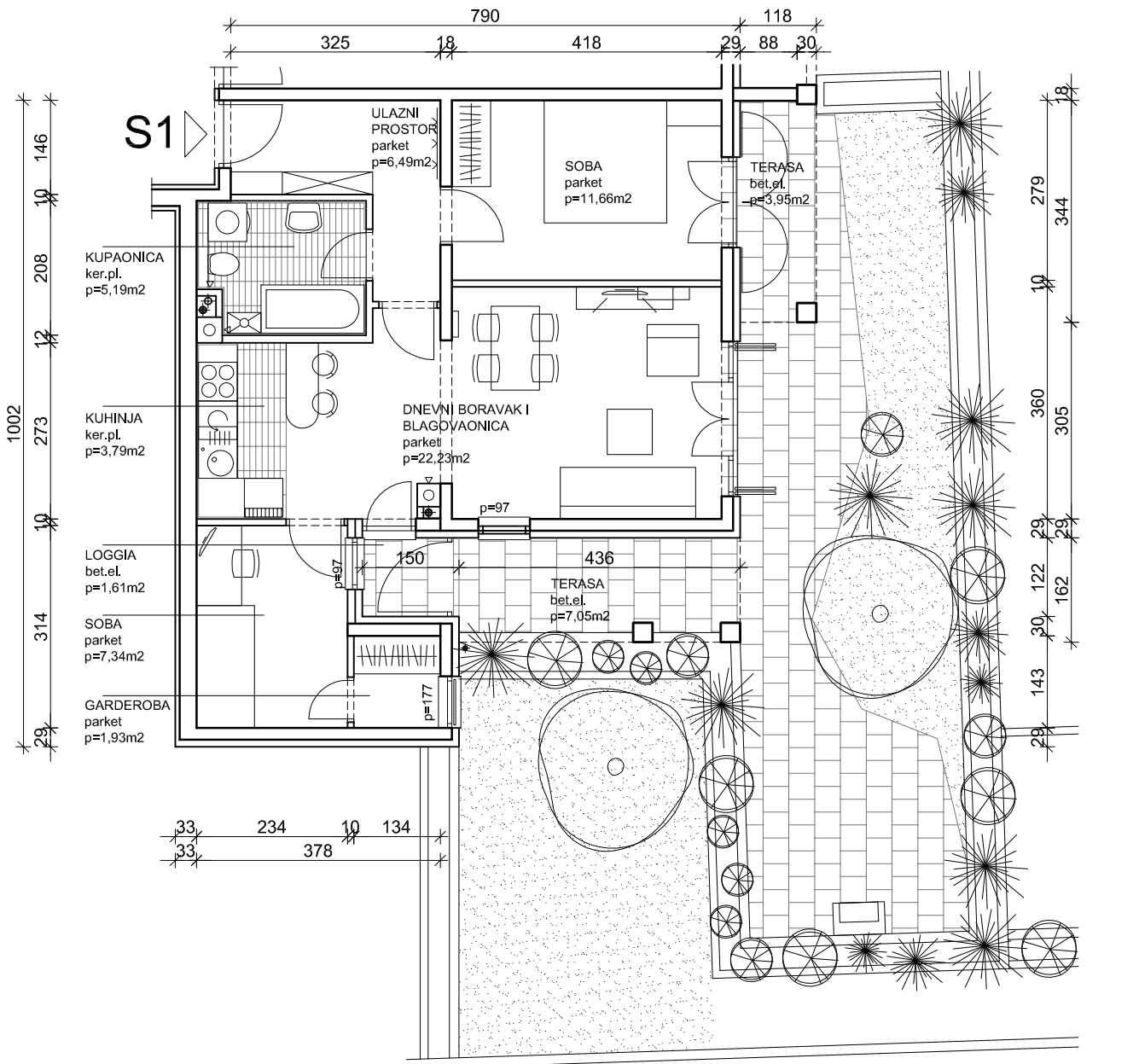
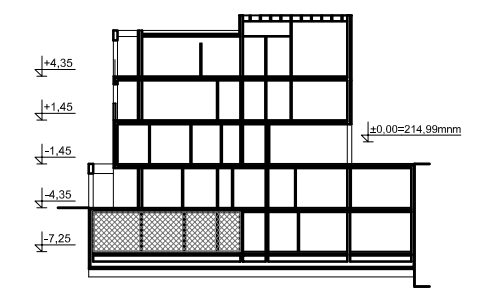
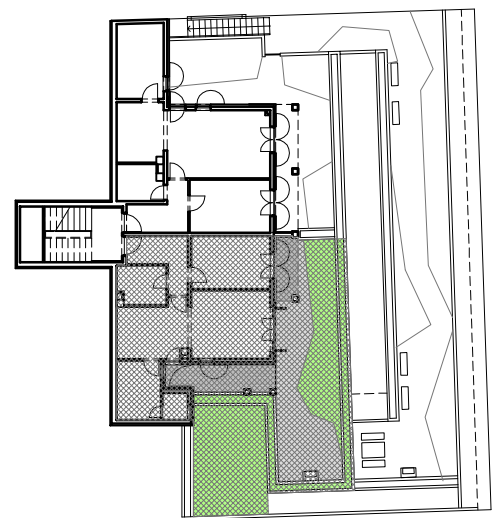
Z5-2

PODRUM : STAN S1

P=77,78m²

PODRUM = razina -7,25m

PRESJEK



iskaz površina	podrum	dvoipolsobni stan	Z52-S1
prostorija	netto površina	netto komercijalna površina	m ²
ulazni prostor	6,49	6,49	m ²
kuhinja	3,79	3,79	m ²
kupaonica	5,19	5,19	m ²
soba	11,66	11,66	m ²
dnevni boravak i blagovaonica	22,23	22,23	m ²
soba	7,34	7,34	m ²
garderoba	1,93	1,93	m ²
loggia (0,75)	1,61	1,21	m ²
terasa (0,5)	7,05	3,53	m ²
terasa (0,5)	3,95	1,98	m ²
UKUPNO:	71,24	65,34	m²
spremište 1 (0,5)	5,67	2,84	m ²
terasa-nenatkrivena (0,25)	22,40	5,60	m ²
vrt - prohodan (0,25)	16,01	4,00	m ²
vrt - neprohodan (0,00)	37,81	0,00	m ²
UKUPNO:	81,89	12,44	m²
SVEUKUPNO Z52-S1:	153,13	77,78	m²