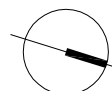
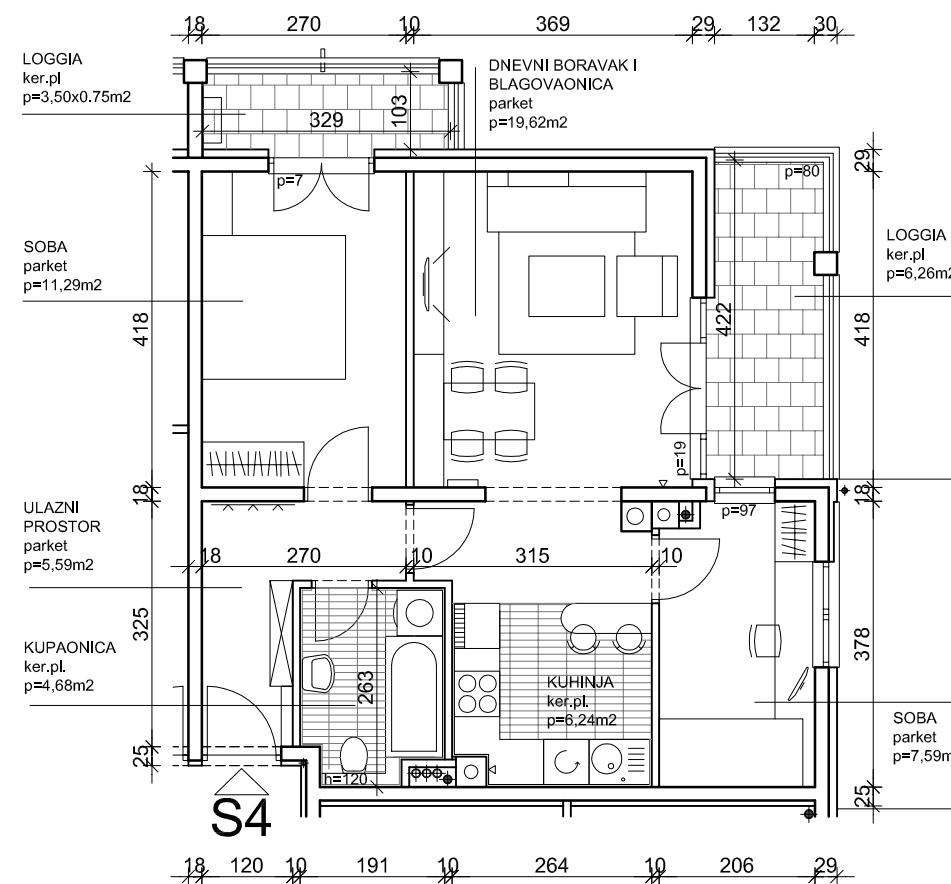
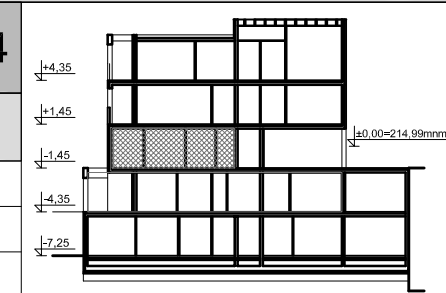


Z4-2
1. KAT:
STAN S4
P=65,12m²

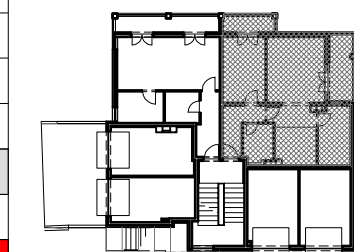


PRESJEK

iskaz površina	1.kat	dvoipol sobni stan	Z42-S4
prostorija	netto površina	netto komercijalna površina	m ²
ulazni prostor	5,59	5,59	m ²
kupaonica	4,68	4,68	m ²
soba	11,29	11,29	m ²
kuhinja	6,24	6,24	m ²
soba	7,59	7,59	m ²
dnevni boravak i blagovaonica	19,62	19,62	m ²
loggia (0,75)	6,26	4,69	m ²
loggia (0,75)	3,50	2,62	m ²
UKUPNO:	64,77	62,32	m ²
spremište 4 (0,5)	5,59	2,80	m ²
SVEUKUPNO Z42-S4:	70,36	65,12	m²



1. KAT= razina -1,45 m



investitor: SGZ STANOGRAD,
 Ilica 109, Zagreb

STAMBENA GRAĐEVINA Z4-2
 Sveti Duh, k.č.1146/12 k.o. Čnomerec,Zagreb