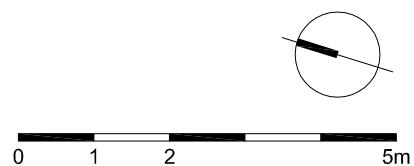
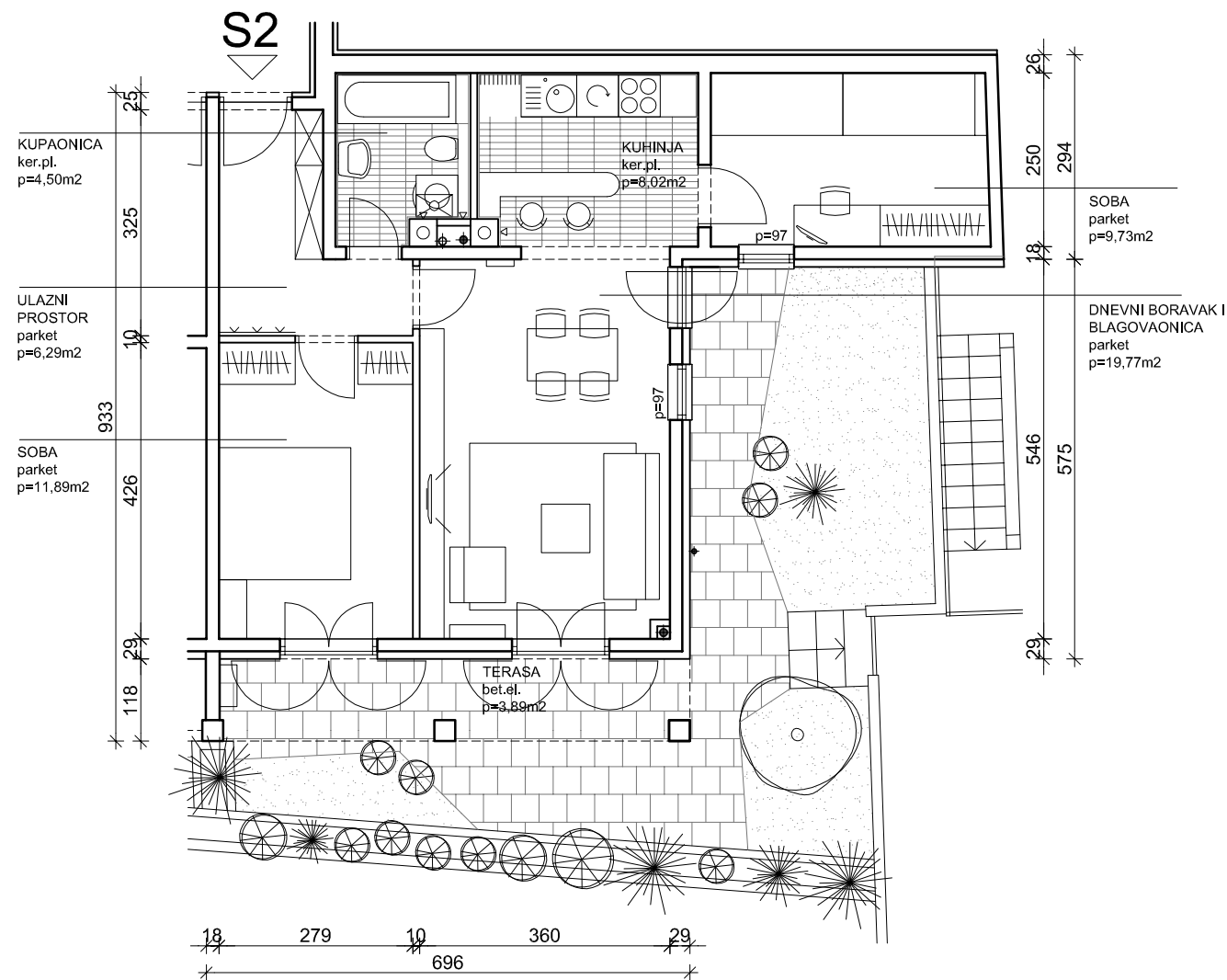
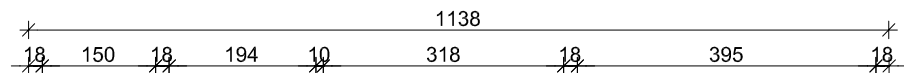
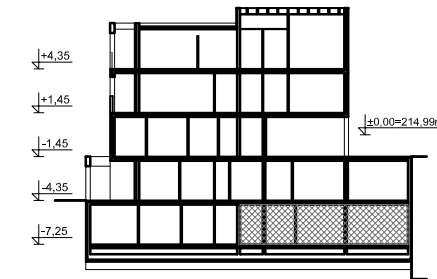
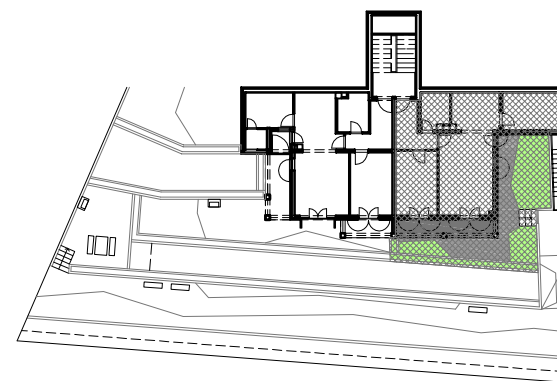


**Z4-2**  
**PODRUM :**  
**STAN S2**  
**P=75,16m<sup>2</sup>**

**PODRUM = razina -7,25 m**

**PRESJEK**



iskaz površina	podrum	trosozni stan	Z42-S2
prostorija	netto površina	netto komercijalna površina	m <sup>2</sup>
ulazni prostor	6,29	6,29	m <sup>2</sup>
kupaonica	4,50	4,50	m <sup>2</sup>
soba	11,89	11,89	m <sup>2</sup>
dnevni boravak i blagovaonica	19,77	19,77	m <sup>2</sup>
kuhinja	8,02	8,02	m <sup>2</sup>
soba	9,73	9,73	m <sup>2</sup>
terasa (0,5)	7,79	3,89	m <sup>2</sup>
<b>UKUPNO:</b>	<b>67,99</b>	<b>64,09</b>	<b>m<sup>2</sup></b>
spremište 2 (0,5)	5,67	2,84	m <sup>2</sup>
terasa-nenatkrivena (0,25)	14,55	3,64	m <sup>2</sup>
vrt - prohodan (0,25)	18,36	4,59	m <sup>2</sup>
vrt - neprohodan (0,00)	7,81	0,00	m <sup>2</sup>
<b>UKUPNO:</b>	<b>46,39</b>	<b>11,07</b>	<b>m<sup>2</sup></b>
<b>SVEUKUPNO Z42-S2:</b>	<b>114,38</b>	<b>75,16</b>	<b>m<sup>2</sup></b>