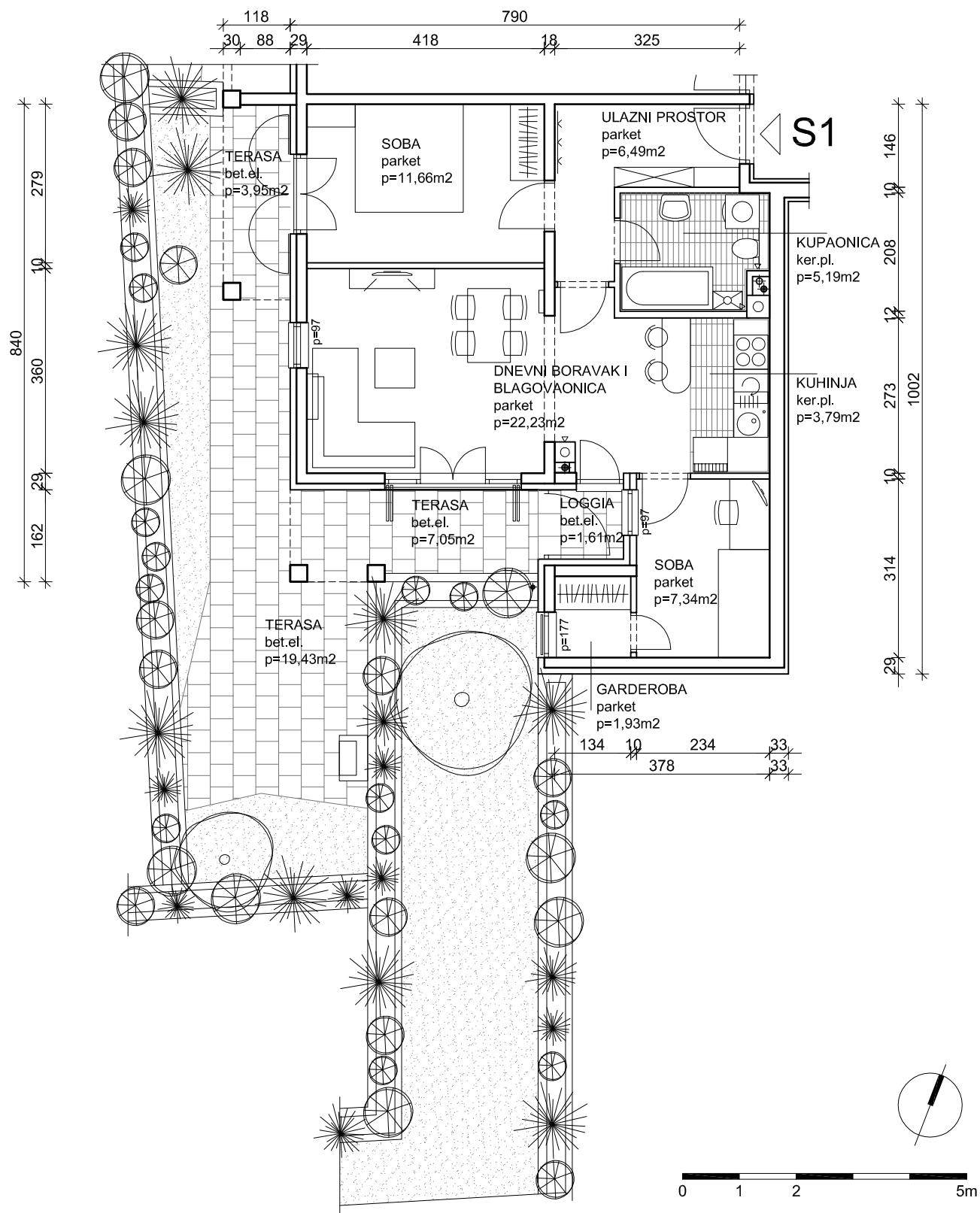
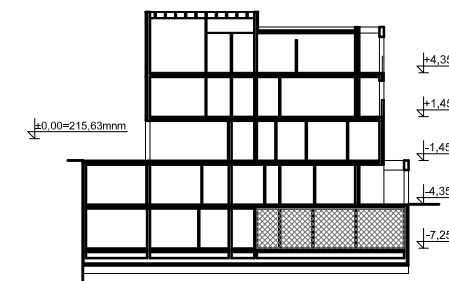
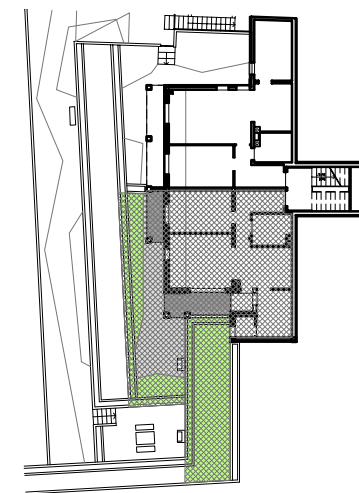


Z4-1
PODRUM :
STAN S1
P=76,04m²

PODRUM = razina -7,25m

PRESJEK



iskaz površina		dvoipolsobni stan Z41-S1	
prostorija	podrum	netto komercijalna površina	m2
ulazni prostor	6,49	6,49	m2
kuhinja	3,79	3,79	m2
kupaonica	5,19	5,19	m2
soba	11,66	11,66	m2
dnevni boravak i blagovaonica	22,23	22,23	m2
soba	7,34	7,34	m2
garderoba	1,93	1,93	m2
loggia (0,75)	1,61	1,21	m2
terasa (0,5)	7,05	3,53	m2
terasa (0,5)	3,95	1,98	m2
UKUPNO:	71,24	65,34	m2
spremište 1 (0,5)	5,67	2,84	m2
terasa-nenatkrivena (0,25)	19,43	4,86	m2
vrt - prohodan (0,25)	12,00	3,00	m2
vrt - neprohodan (0,00)	42,16	0,00	m2
UKUPNO:	79,26	10,70	m2
SVEUKUPNO Z41-S1:	150,50	76,04	m2